



# FRS Classic / FRS Elite

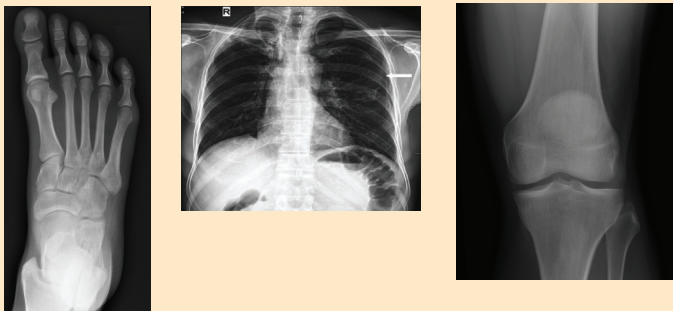
MULTI-PURPOSE FLOOR RAIL RADIOGRAPHIC SYSTEMS



# FRS Classic

Work smarter, not harder.

The AMRAD Medical FRS (Floor Rail System) is a traditional floor-mounted tube stand with a motorized wall stand that puts the best of upright imaging and table imaging all-in-one. The FRS can handle the busiest of environment and is perfect for Urgent Care Centers, Hospitals and Orthopedic Surgeons.



## Perform a full range of exams including:

- ✓ Upright thoracic imaging
- ✓ Upper and lower extremities
- ✓ Weight-bearing studies
- ✓ Table and cross-table exams are possible with the mobile table

## Features and Benefits

- **Improve Productivity** - Providing complete exam coverage with simple positioning improves workflow and productivity.
- **Simplicity** - A simple, durable design minimizes the potential for downtime
- **Protect your Investment** - The single receptor design protects your DR investment by not requiring panel movement between receptor locations
- **Minimal Learning Curve** - Traditional floor-mounted design means no complicated learning curve for technologists
- **Industry's Best Warranty** - 5-year parts warranty, standard, ensuring a low cost of ownership



*Features include angulation dial, operator handgrips, and electric positioning locks*



# FRS Elite

Increase efficiency, save time.

## Upgrade to Auto-Tracking!

Quick efficient positioning improves throughput and productivity. The AMRAD Medical FRS Elite comes equipped with our auto-tracking feature which allows the tech to position the tube stand while staying right beside their patient at the wall stand.

With the simple touch of a button on the angulation handle, auto-tracking can be enabled keeping the tube stand constantly aligned with the wall stand as it is moved up and down for positioning. Any movement of the tube stand will disengage auto-tracking and the tube stand will operate in a manual mode.



# FRS Specifications

## Motorized Elevating Detector Stand

- -15° to +105° manual cabinet rotation in 5° increments
- Available with mounting plate for fixed DR or removable 103 line 10:1 grid
- Collision sensing and emergency shut-off
- Right or left shoot

## Floor Mount Tubestand

- 95.5 in. x 17 in. (includes travel track) floor rail assembly
- Manual, fully counterbalanced movement
- Electric locks
- Tube rotation: +/- 135°

## Mobile Table

- 500 lb. rated patient load
- 30 in. x 80 in. flat, seamless table top
- 27.5 in. table height
- Hospital-grade swivel casters with four locks



## Certified Manual Collimator

- LED light source
- Patient Position LASER

## Generator Options

- 30kW to 80kW generators



**SUMMIT INDUSTRIES**  
**A NETWORK OF SERVICE & SUPPORT**

*Summit Industries' successful service network surrounds you with a dynamic team of exceptional experts. Your organization and your patients will benefit from the experience and best practices that only Summit Industries and their Authorized Dealer Network can offer.*



**SUMMIT INDUSTRIES, LLC**

7555 N. Caldwell Avenue, Niles, Illinois 60714

(p) 773-353-4000 | (p) 1-800-729-9729



LITR030-0225

[www.amradmedical.com](http://www.amradmedical.com)