



CS Classic

WALL MOUNTED CHEST STAND SYSTEM



The AMRAD Medical CS system is designed for facilities that specialize in Pulmonology and Occupational Medicine.

- 30-50kW generators
- Accommodates a full range of upright exams
- Pair with optional mobile table to expand imaging capabilities
- DR upgradeable - ask about our digital upgrade solutions

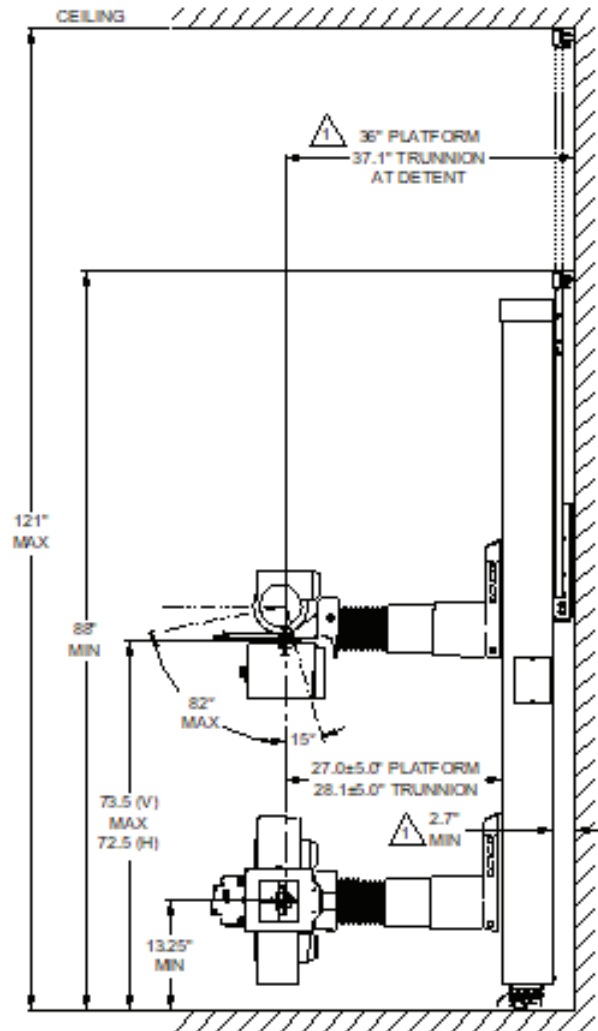
Specifications

Floor-to-Wall or Floor-to-Ceiling, Non-Rotating with Transverse Travel Tubestand

- Fully counterbalanced
- Platform tube mount
- 24 in. angulating tubearm
- +/- 5 in. transverse tube travel
- Angulation dial and operator handgrips
- Vertical, horizontal, transverse and tubearm angulation electric locks
- 8 ft. rails (provides 6.5 ft. travel)
- Floor-to-ceiling mount for 88 in. – 121 in. ceiling height
- 13.25 in. minimum (focal spot to floor), 73.5 in. maximum vertical travel
- Operates on 24VDC

Wallstand Package

- Counterbalanced column, floor-to-wall mounted
- Grid Cabinet, 17 in. x 17 in.
- Grid: 10:1 ratio, 103 LPI
- Heavy-Duty Deluxe cassette tray
- Specify left or right load
- Electric locks



SUMMIT INDUSTRIES
A NETWORK OF SERVICE & SUPPORT

Summit Industries' successful service network surrounds you with a dynamic team of exceptional experts. Your organization and your patients will benefit from the experience and best practices that only Summit Industries and their Authorized Dealer Network can offer.

AMRAD  **Medical**
by Summit Industries

SUMMIT INDUSTRIES, LLC
7555 N. Caldwell Avenue, Niles, Illinois 60714
(p) 773-353-4000 | (p) 1-800-729-9729



www.amradmedical.com

LITR044-0225