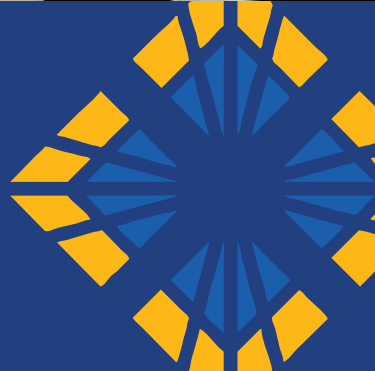




AGILITY+
Product Data



Main Application



Agility+

- Orthopaedic
- Head & Column: Spine fixations, Pain management
- Thorax: Pacemaker connections, Electro-Physiology
- Abdomen: E.R.C.P.
- Vascular peripheral
- Vascular abdominal
- Vascular cerebral
- Cardiac



Ergonomic

- Large C-arm depth for maximum accessibility: open space 81cm, SID107cm
- Smart operator console: Full Touch User interface and live fluoro image display
- +95°-65° orbital rotation, overscan
- X-ray generator: 20kW max. power - 100kV-200mA
- Special soft covers around the base protecting the operator against accidental collisions

Main Features:

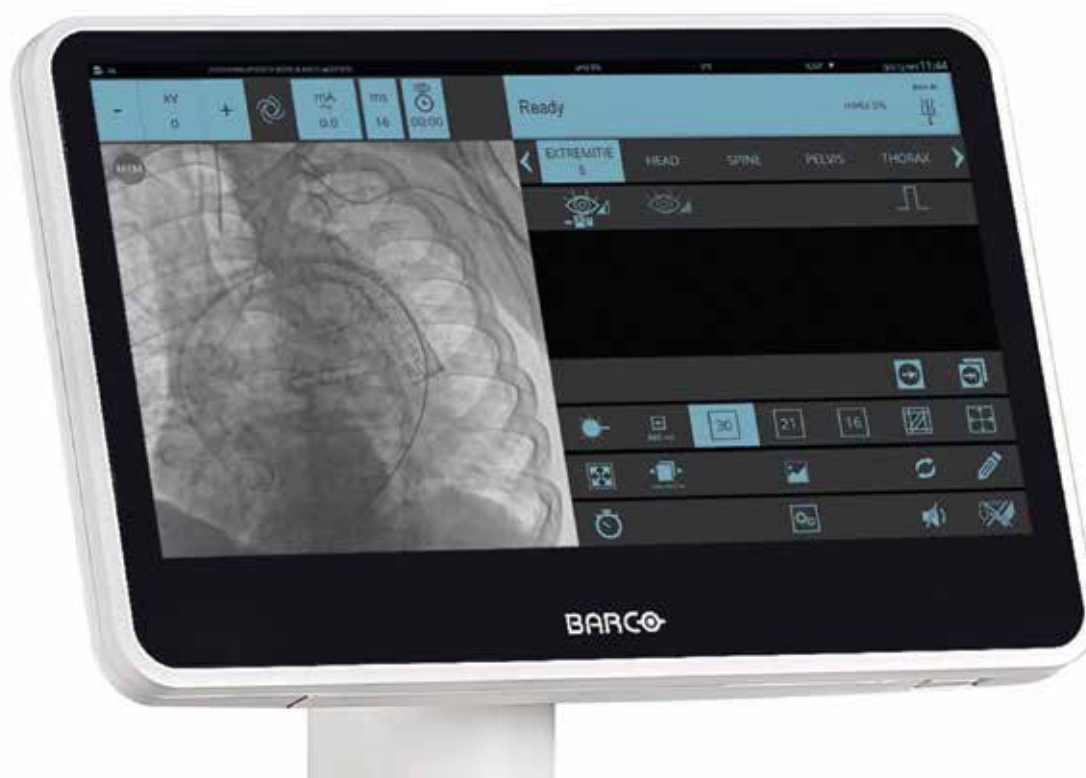
- Height & Angle adjustable of 21.5" Full HD wide displays
- Operating system Windows 10
- Full touch "smart" user interface
- Extended C-arm free space



Operator Control Panel

- Full touch “smart” user interface
- Real-time image display
- Compact LED display & high performance professional PC

Smart User Interface	Only touch operation, no keyboard and mouse
Technology	Multi-touch, color 12.5” LCD panel
Application	Image live and full operator interface control
Console Positioning	±135° rotation
Display Brightness	400 cd/m ² (typ)
Display Contrast	1000:1
Display Resolution	1920 x 1080 pixels
Display Useful Area	276.5 x 157.5 mm



Flat Panel Detector Unit

Main Features:

- Dynamic Flat Panel surgical dedicated
- High Resolution Fluoroscopy: up to 3.2 lp/mm
- aSi & CsI Layers
- High Sensitivity
- Robust and compact



Model	Pixium 2121S		Pixium 3030S	
Technology	Pixium" CsI coupled to TFT matrix aSi		Pixium" CsI coupled to TFT matrix aSi	
Pixel Pitch	154 μ m		154 μ m	
DQE @ 2 μ Gy, RQA5	0 lp/mm - 77%	3.2lp/mm - 20%	0 lp/mm - 77%	3.2lp/mm - 22%
MTF	1 lp/mm - 59%	Nyquist - 11%	1 lp/mm - 59%	Nyquist - 11%
A/D Conversion	16 bits		16 bits	
Useful Area	207mm x 207mm		301mm x 301mm	
Matrix	1344 x 1344 pixels		1956 x 1956 pixels	
Frame Rate	25 FPS		25 FPS	

Flat Panel Detector Unit



Anti-scattering X-Ray Grid

Special Application	Removable Grid (without tools)
Material	Aluminum
Line Rate	80 Lines/cm ratio 8:1
Focus Distance	100 cm

Laser Localizer

Operation	Cross light on flat panel and x-ray tube side
Laser Diode Power	< 5mW, 1 M Class
Wavelength	635nm
Focus Distance	100 cm



View Station

Main Features:

- Height & Angle adjustable of 21.5" Full HD wide format displays
- Full touch "smart" user interface
- Easy to clean without keyboard & mouse
- Reduced C-arm bulkiness



Smart User Interface	Only touch operation, no keyboard and mouse
Technology	Multi-Touch , Color LCD panel, LED backlight
Application	Medical display, Clinical review monitor
Size, Resolution, Viewing Angle	Two 21.5", 1920x1080 pixel, full HD, 178°
Brightness	600Cd/m ² typical
Contrast	5000:1
Displays Height	178-153 cm continuous adjustable
Displays Rotation	±180° continuous adjustable

X-Ray Generator

	5 kW	20kW
Max Voltage	120 kV	120 kV
High Frequency	40 kHz	40 kHz
Max mA in Pulsed Fluoro	40 mA	100 mA
Max mA in Digital Radiography	100 mA	200 mA
Max Power	5 kW(*)	20 kW

(*) Nominal power according to EN60613: 4kW



Main Features:

- Power management to handle long procedures
- Controlled high power X-Ray pulse
- Remote controlled filters



X-Ray Monoblock

Model	Passive Cooling	Active Cooling
Total Thermal Capacity	1020kJ	1890kJ
Continuous Total Thermal Dissipation	130W	250W
Total Filtration	3 mm Al	3 mm Al

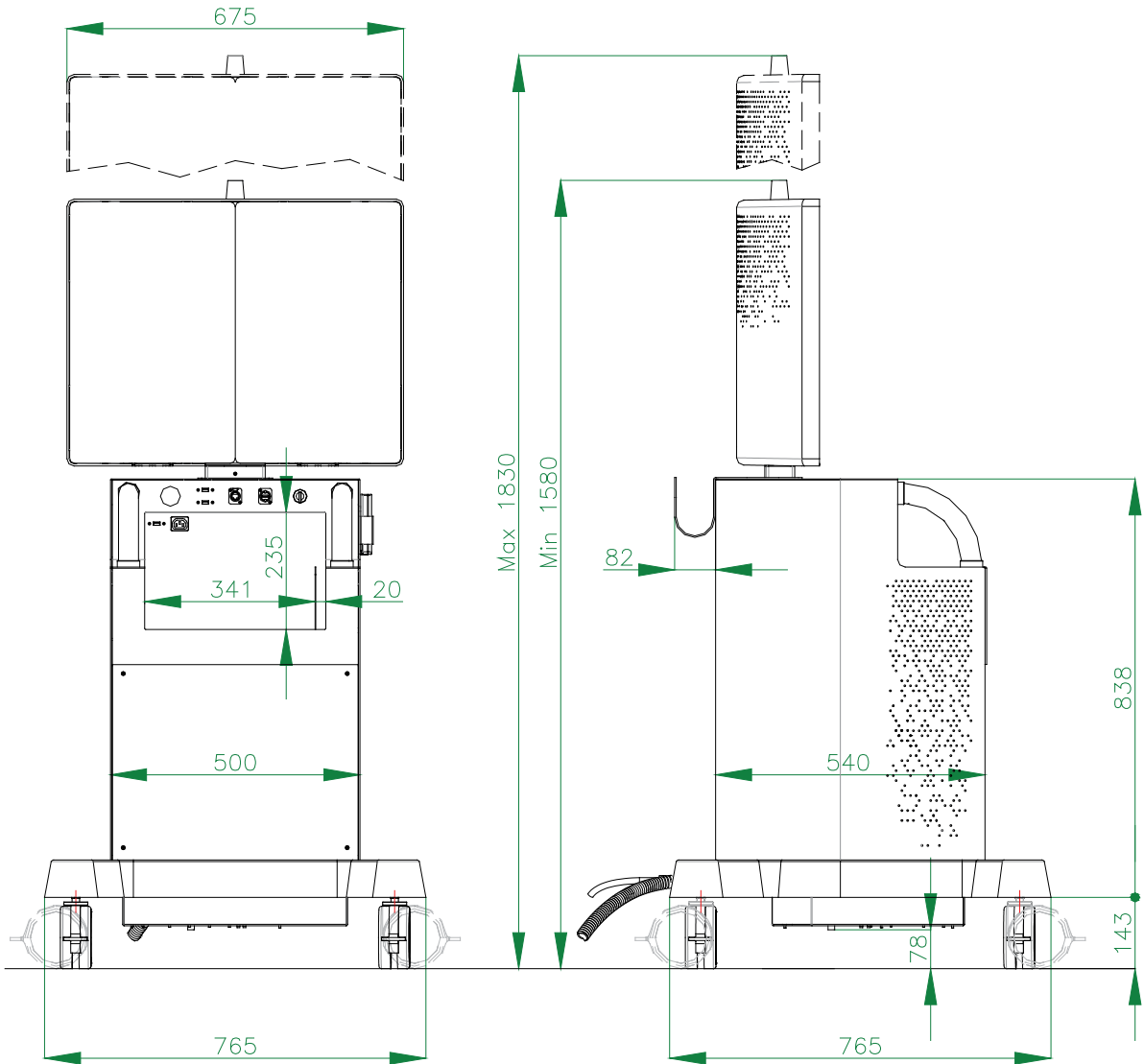
X-Ray Tube

Model	Rotating Anode
Focus	0.3mm / 0.6mm
Anode Thermal Capacity	225kJ (314 kHU)
Anode Continuous Heat Dissipation	750W (63.000HU/min.)
Anode Maximum Heat Dissipation	1300 W (104.000HU/min.)
Max Anode Load SF/LF	6 kW – 25 kW

X-Ray Collimator

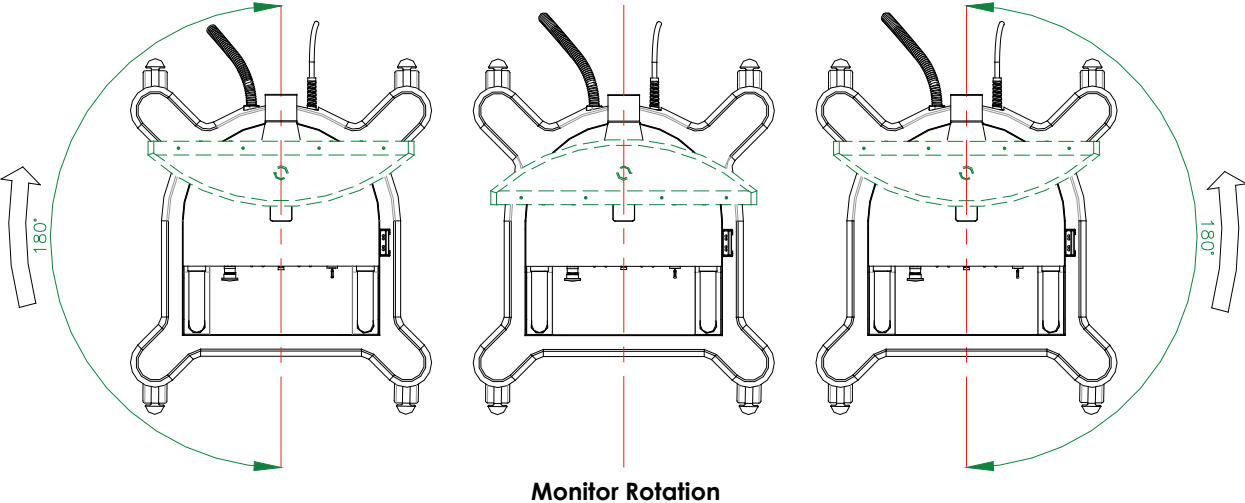
Field	Square, continuous adjustment open/close
Shutters	Open/close–CCW/CW continuous adjustment, asymmetrical adjustable shutters
Remote Controlled Filters	2mmAl, 1mmAl+0.1Cu, 1Al+0.2Cu

Dimensions



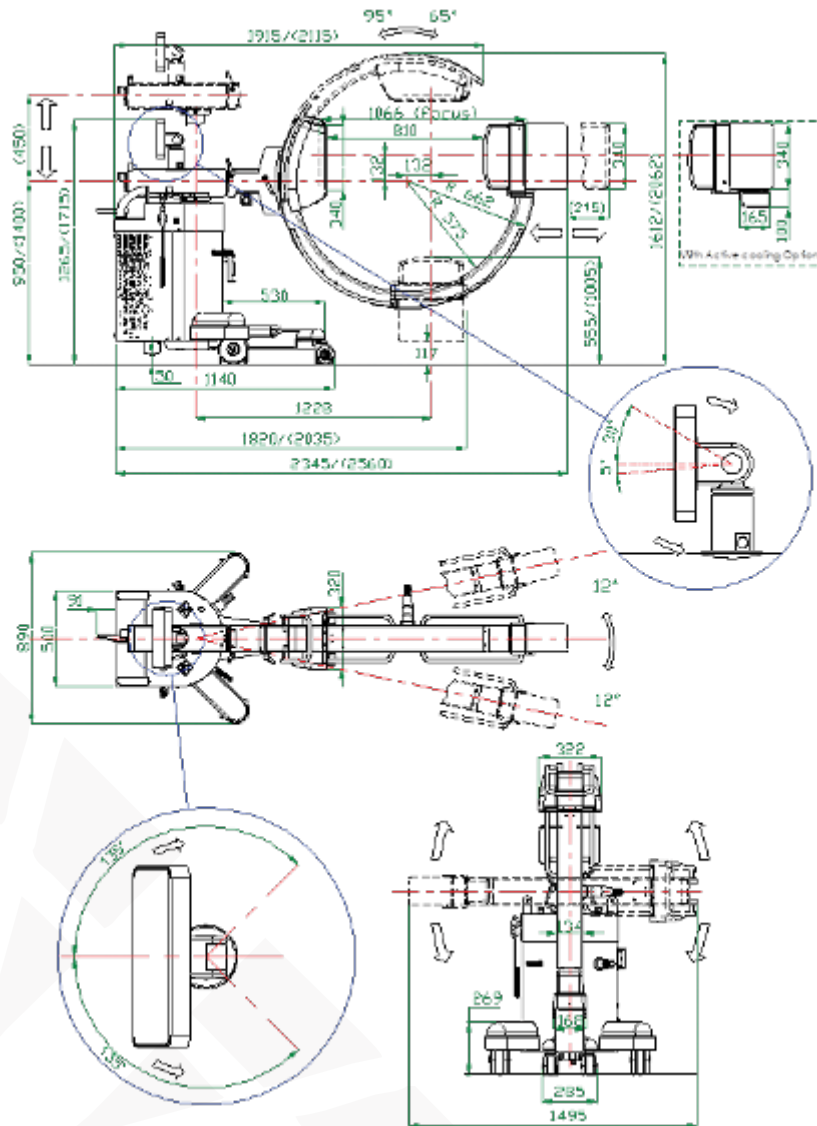
Note: Dimensions shown in mm

Weight: 140 kg



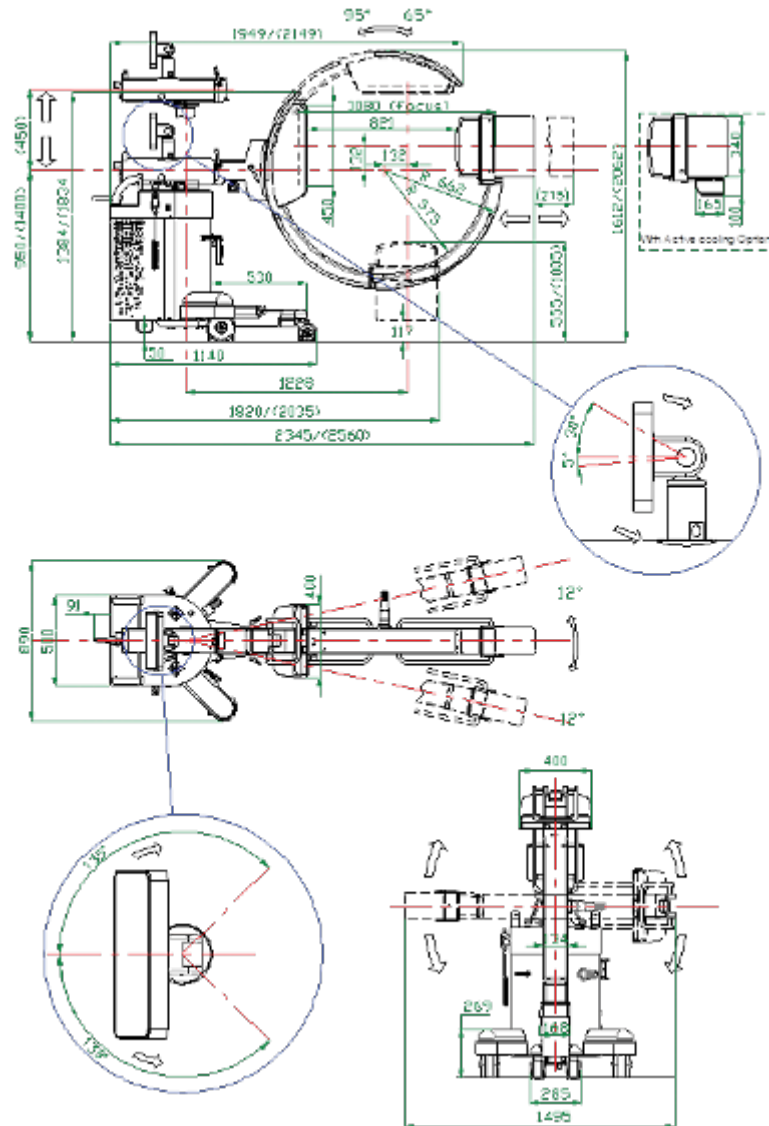
Dimensions

AGILITY PLUS 0521 / AGILITY PLUS 2021



Weight
280 Kg

AGILITY PLUS 0530 / AGILITY PLUS 2030



Weight
280 Kg

PIONEERS IN RADIOLOGY SINCE 1984

A NETWORK OF SERVICE + SUPPORT

Enjoy all the advantages of our successful service network. From the first shot to the last managed image, we work to continually improve your imaging performance and patient experience.

Summit Industries' successful service network surrounds you with a dynamic team of exceptional experts. Your organization and your patients will benefit from the experience and best practices that only Summit Industries and its authorized dealer network can offer.



AMRAD Medical AgilityPlus Product Data

SUMMIT INDUSTRIES, LLC
7555 N. Caldwell Avenue, Niles, Illinois 60714
(p) 773-353-4000 | (p) 1-800-729-9729

amradmedical.com



LITR056-0623